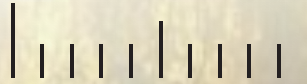
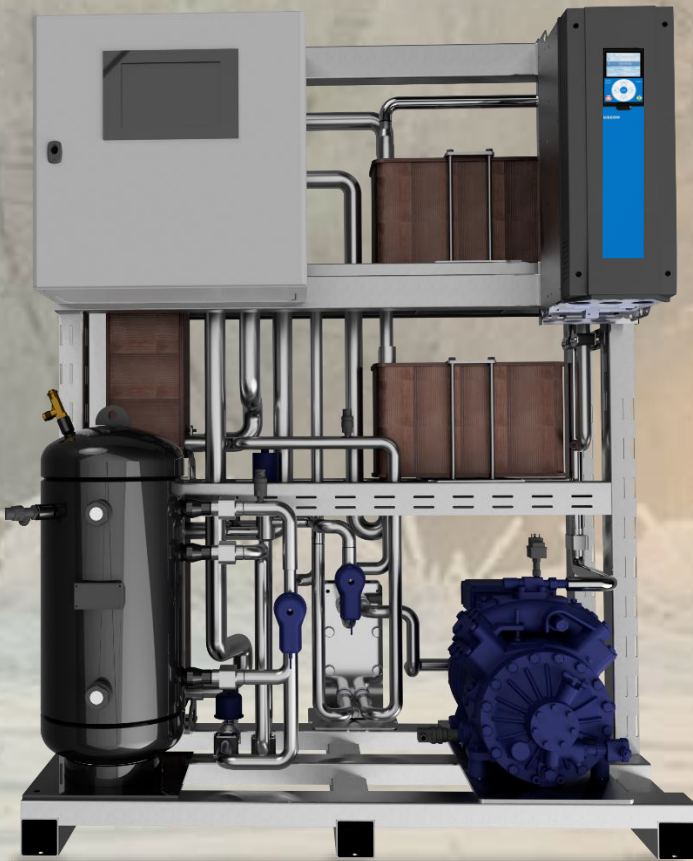


TEMPIA

Chilled Frozen Heated



CO₂ CHILLER AND HIGHTEMP HEATPUMP!



CO2PRO™ CHILLER HEAT

An innovative solution that combines the power of CO₂ with our technology to deliver superior cooling and heating in one system. Designed for both maritime and land-based applications, this unit offers up to 400 kW capacity per compressor, with scalable integration options as needed.



Online Support and
Service

TEMPIA

Chilled Frozen Heated



CO2PRO™ CHILLER HEAT

Why Choose the CO2PRO™ HEAT

An innovative solution that combines the power of CO₂ with our technology to deliver superior cooling and heating in one system. Designed for both maritime and land-based applications, this unit offers up to 400 kW capacity per compressor, with scalable integration options as needed.

Advantages of the CO2PRO™ CHILLER

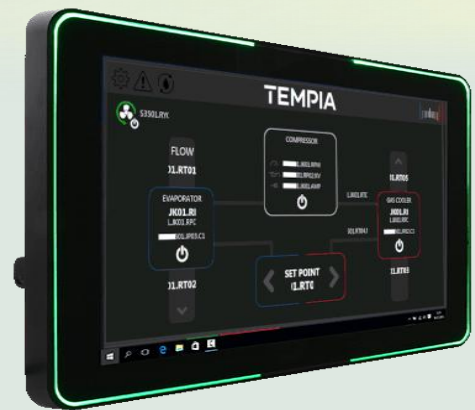
The CO₂PRO Chiller uses CO₂, as natural and environmentally friendly refrigerant, ideal for both new and retrofit installations. Its compact design integrates seamlessly into both existing and new installations, maximizing space and efficiency while ensuring optimal cooling capacity for industrial and commercial applications.

Technical highlights:

- + Outlet temperature up to 85°C
- + Outlet temperature down to -20°C
- + Compact footprint
- + Capacity: Up to 400 kW per compressor
- + Modbus communication in/out

Options:

- + Heat recovery
- + Titanium tube heat exchanger for polluted seawater as evaporator
- + Titanium tube heat exchanger for polluted seawater as gas cooler
- + Optional PLC expansion for control of external circuits
- + Customizable control sequences for third-party equipment
- + BACnet communication in/out
- + Ejector for maximum energy efficiency



Stay Ahead with Environmental Technology!

Contact us to learn how our solutions can meet your heating and cooling needs

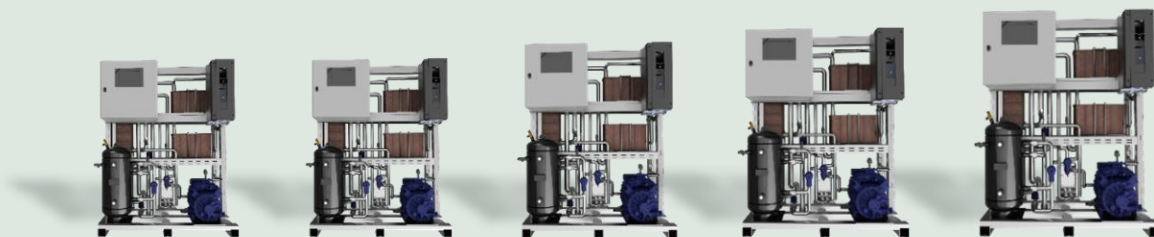
We understand the importance of reliable operation and optimal performance for your cooling and heating systems. Our team of experienced technicians provides fast and efficient service, maintenance, and repairs to ensure your units operate at peak performance.

Tempia.no

post@tempia.no

+47 975 34 147

CO2PRO™ CHILLER HEAT



Feature	CH2000	CH3000	CH4501	CH80145	CH90153	CH14065
Cooling capacity (kW)	60	90	130	210	250	300
Heat Capacity (kW)	65	100	150	240	280	340
Max Power Consumption (kW)	22	30	45	75	90	
Power Supply (V)	230/400V				400v	
Refrigerant (CO ₂)	<25kg			<35 kg		
Pump capacity Gas Cooler (m³/h)	6	8	10	12	15	25
Pump capacity Evaporator (m³/h)	30	35	40	50	60	80
Weight (kg)	852	860	870	1390	1431	1726
Dimensions (L x W x H mm)	1216 x 725 x 1720	1216 x 725 x 1720	1216 x 725 x 1720	1800 x 900 x 1951	May vary: 1800 x 950 x 1951	May vary: 1900 x 1000 x 1951
Compressor Model	CD2000H	CD3000H	CD4501H	CD6801-45H	CD901-53H	CD1400-65H
Compressor Type	Dorin - Semi Hermetic					
Frame Material	SS316					
Temperature Settings (°C)	Up to 85°C					
Oil Type	Reniso C85E					
Exchanger EV	Alfa Laval					
Exchanger GC	Alfa Laval					
CO ₂ Piping Material	SS304					
Bolt Material	SS316					
Optional Accessories	CO ₂ Gas Detection, Energy Loggers, Pumps, and more.					

Capacity based on the following operating conditions

Cooling: 0°C evaporation temperature and a water return temperature on the warm side of 18°C

Heat: 0°C evaporation temperature and a water return temperature on the warm side of 30°C

Note: Dimensions, components, and capacity may vary depending on selected options

CO₂ is non-toxic, non-flammable, and abundantly available, making it a safe and economical choice for many applications.

Tempia.no